

DEFECTOSCOP Standard Probes Pencil probes 2.832-....



Fig. 1 Eddy-current scanning coils for detecting material flaws on the surface of electrically conductive materials

Characteristics

- * High sensitivity
- * High electrical and mechanical stability
- * Testing task-oriented:
 - connection type of the coil system (absolute, differential)
 - test frequencies
 - effective coil width
 - design
- * Connection cable plug-in type
- * Can be used with DEFECTOSCOP SD and DEFECTOSCOP AF

Characteristics for pencil probe absolute, shielded, flexible

- * Variable probe position 0 to 90°
- * All around movability of the flexible shank.
Min. bending radius 50mm
- * Good capability to persevere
- * Low adjusting force

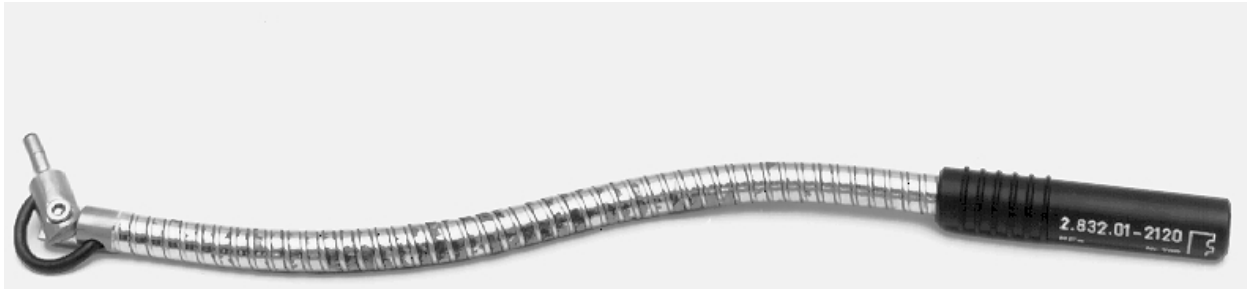


Fig. 2 Eddy-current scanning coil for detection of flaws on the non-accessible surface of planking

Application

Manual crack testing during inspection and maintenance work

Detecting different materials

Pencil probe, absolute, shielded, flexible
Detection of flaws on the non-accessible surface of planking

Technical data

Scanning coil array in accordance with DIN 54 140 Part 1; reflection method

transformational system; absolute

transformational system; differential

bridge connection

	Pencil probe absolute 128 107 0	Pencil probe differential 128 108 9	Pencil probe differential angled 128 109 7	Pencil probe absolute, flexible, shielded 134 019 0	Unit
Primary current	max. 80	max. 80	max. 80		mA
Frequency range	0.1 to 10	0.1 to 10	0.1 to 10	0.01 to 0.1	MHz
Effective width B_W	1.6	1.6	1.6		mm
Track width B_S	0.5	0.54	0.54		mm
Clearance behavior K_A	0.49	0.23	0.25		mm
Groove depth resolution K_{NT}	1.78	1	1		mm
Spatial resolution K_O	1.36	1.84	1.84		mm
Reference flaw length K_L	4.66	4.54	4.54		mm
Edge influence K_R	- 0.92	- 1.1	- 1.1		mm
Coil core	no	yes	yes	yes	
Shield	no	no	no	yes	
Circuit type	bridge connected	bridge connected	bridge connected	absolute	
Mass	10	10	16	80	g

Ordering instructions

Pencil probes with dimensions A= 4 mm and B= 12.5 mm in addition to all pencil probes, angled, with dimension A= 4 mm, B= 10 mm and C= 100 mm (see dimension drawings) are available ex-warehouse.

Special versions of the pencil probes with any values for dimension B in the range >12.5 to 250 mm and pencil probes, angled, with any values for dimension B in the range >10 to 25 mm and dimension C in the range >100 to 250 mm are manufactured on request. In such cases, the required values for dimension B or B and C must always be specified in addition to the type no.

Special versions which are manufactured to order cannot be returned.

Exampel orders for pencil probe, special version:

pencil probe 2.832.99-2400

dimension B= 125 mm

pencil probe angled 2.832.99-2550

dimension B= 15 mm, dimension C= 125 mm

Designation	Part-No.	Order-No.
-------------	----------	-----------

Pencil probes

Pencil probe, absolute	2.832.01-2400	128 107 0
Pencil probe, differential	2.832.01-2500	128 108 9
Pencil probe, differential, angled	2.832.01-2550	128 109 7
Pencil probe, absolute, shielded, flexible	2.832.01-2520	134 019 0

Special versions of pencil probes

Pencil probe, absolute	2.832.99-2400	132 785 2
Pencil probe, differential	2.832.99-2500	132 783 6
Pencil probe, differential, angled	2.832.99-2550	132 784 4

Probe cable 3 m (100 Hz to 1 MHz)	2.832.02-9902	145 991 0
Probe cable 1.5 m (100 Hz to 10 MHz)	2.832.02-9901	145 990 2

Should you have any special problems please contact:

Foerster Instruments Incorporated

140 Industry Drive
 RIDC Park West
 Pittsburgh, Pa 15275-1028

Phone: (412) 788-8976
 Fax: (412) 788-8984
 sales@foerstergroup.com

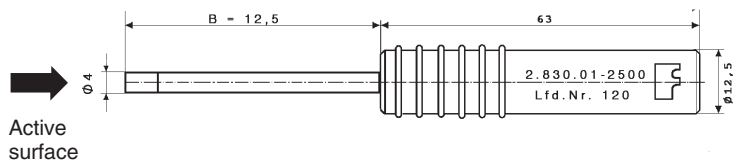
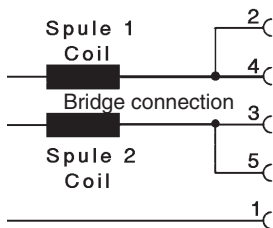


Information and illustration may be subject to change

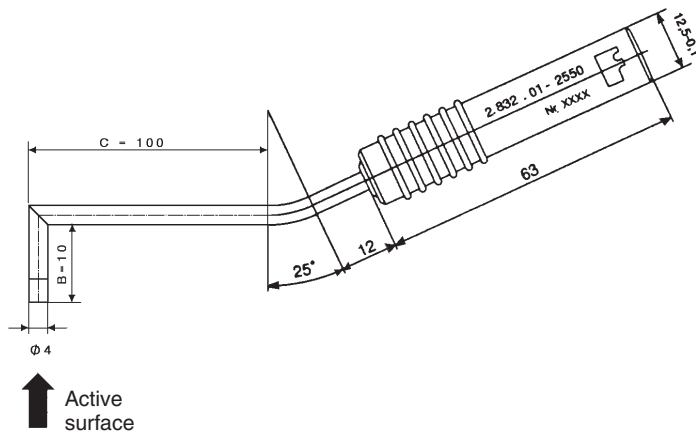
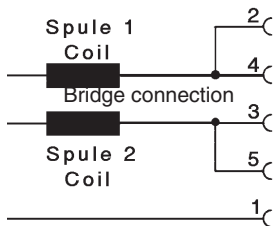
Order No. 134 131 6
 Edition 05/94 D151096
 Author Do

Dimensions

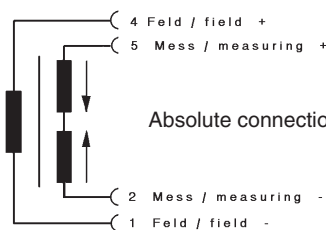
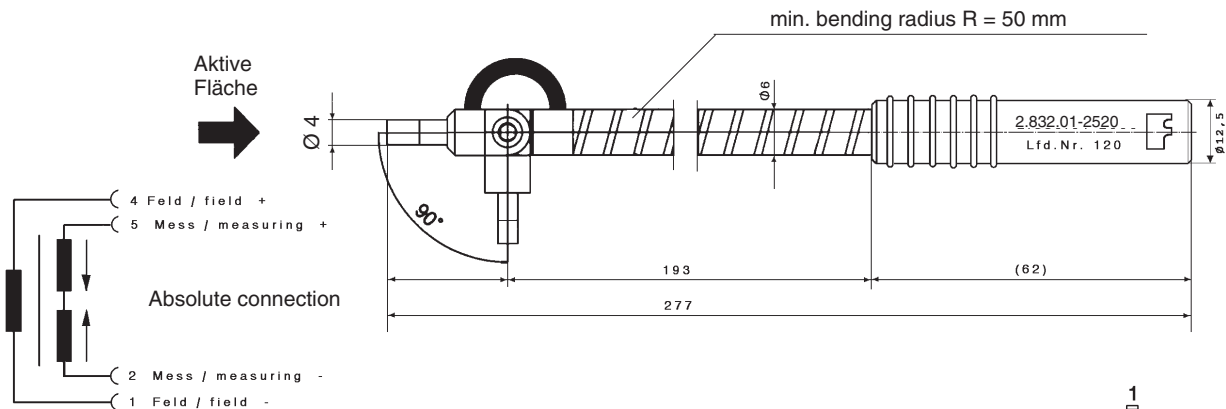
Pencil probe absolute and differential



Pencil probe differential angled



Pencil probe absolute, shielded, flexible



5 pin Lemo plug
 Plug type RG OB 305 C A222 (Lemosa)
 Plug type FG OB 305 C O45 (Lemosa)

